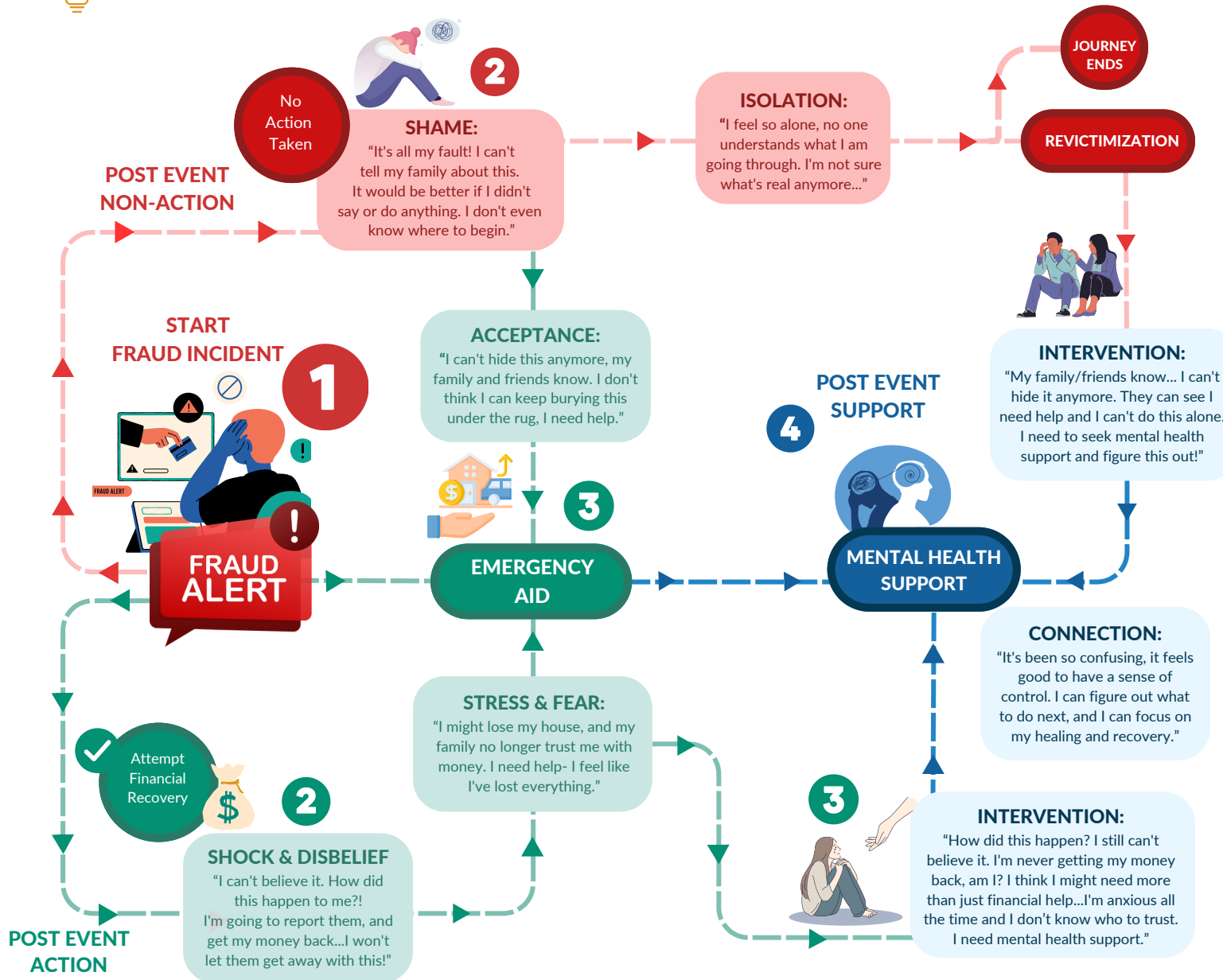




Journey maps encapsulate the voices and experiences of real victims over a specific time period, detailing their interactions at various stages. When deciphering this map, the depicted actions illustrate key stages along the victim's journey.



*Stigma*

Victims report feelings of shame, humiliation, and guilt - **almost half of victims blame themselves.** This can result in no action being taken by the victim, often leading to revictimization

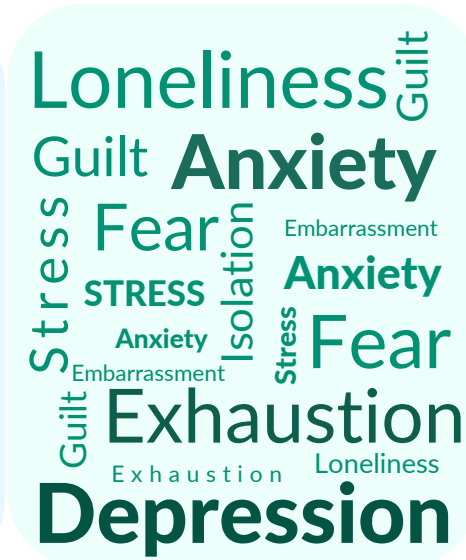
*Grief*

Grief, often overshadowed by the tangible loss of finances, emerges as the predominant emotion experienced by victims of financial fraud. **This grief transcends the depletion of monetary resources;** it signifies a profound mourning for the shattered dreams and expectations of the future they had envisioned. The financial loss is merely the surface of a deeper, more painful emotional ordeal, where the **heartache of relinquished dreams and betrayed trust takes center stage,** overshadowing the material loss.

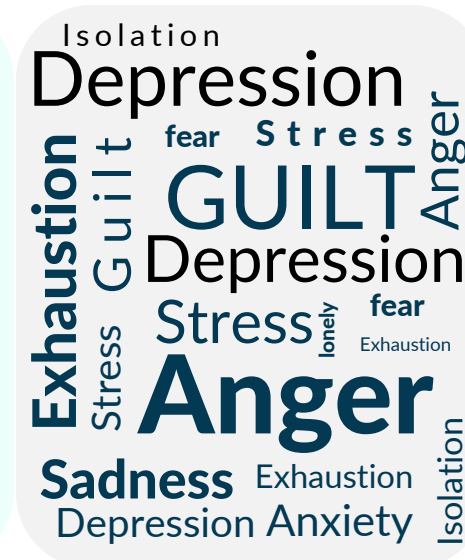
0-3 Months  
Post-Fraud



3-6 Months



6-9 Months



9-12 Months



Examinations of the language employed by victims of financial cybercrimes reveal a significant shift over time, with a marked increase in references to their psychological state and usage of words that harken back to the event. This language shift underscores the complex post-traumatic stress response they are grappling with. In the year succeeding the incident, the variety of language they employ to discuss their mental health widens considerably. Among the newly adopted expressions, there is a notable surge in the use of terms that convey negative emotions. Words encapsulating sentiments such as anger, frustration, trauma, guilt, shame, and skepticism, among others, become strikingly more common, indicating the prolonged psychological impact these crimes have and reinforcing the complex post-event emotional processing and mental health struggles following these events.



POST EVENT INTERVENTION



POST EVENT SUPPORT



HEALING & RECOVERY